A long, multi-tiered border wall stretches across a desert landscape. The wall consists of several parallel layers of concrete pillars with horizontal slats. The foreground is a rocky, sandy area with sparse, low-lying vegetation. In the background, there are rolling hills under a clear sky. A large, semi-transparent orange circle is overlaid on the right side of the image, containing the title text.

Ultimate Guide to Ursid's Rapid Deployment Cameras

ULTIMATE GUIDE TO URSID'S RAPID DEPLOYMENT CAMERAS

In a world where crime is becoming more sophisticated each day, rural, farming, and agricultural crime increase. CCTV plays a significant role in providing evidence, warding off criminals, and protecting businesses, estates, farms, and vineyards from theft or damage. Traditional CCTV has worked wonders for years, but now might be the time to step up the security of your estate, farm, orchards, or vineyards and invest in a rapid deployment system. This article will guide you through the ins and outs of Ursid's fast deployment system, how much the cost of the cameras and how to correctly choose rapid deployment cameras for your enterprise.



What Is Rapid Deployment Systems?

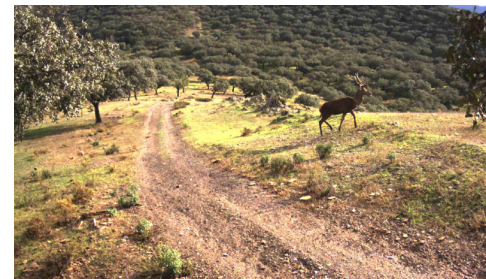
Rapid deployment cameras are portable devices installed on a temporary or permanent basis in crime or expected poaching hotspots. They are used to provide covert surveillance or extend the coverage of traditional systems that may already be in place. Rapid deployment cameras are devices that the security team or keepers can quickly move to wherever needs them the most. They are attached to street lighting, buildings, trees, or hidden and can be fitted on very short notice.

Rapid deployment cameras are battery-powered, which means that they can stand in any location, don't rely on nearby sources of electricity to work, and operate via a GSM or satellite network. The name rapid deployment reflects how quickly they can be deployed and installed in high crime areas or poaching hotspots or trails.

If you have an estate or farm that requires increased or possibly contact surveillance – in cases of antisocial behavior such as fly-tipping, trespassing, or poaching, for example – a rapid deployment system may be precisely what you're looking for. Rapid deployment systems are the ultimate solution to proactive surveillance by running off a rechargeable battery and easily adjustable for better views.

The Detector

An autonomous motion-triggered high dynamic range camera system.



When Are Rapid Deployment Cameras A Better Solution Than More Traditional CCTV Installation?

When Security Is Required Quickly

Ursid rapid deployment cameras can be up and running within minutes, whereas traditional CCTV cameras can take days to be installed, particularly in large estates, and are incredibly costly. This makes rapid deployment units a far better option for last-minute security needs.

Often the mere presence of visible CCTV is enough of a deterrent to prevent antisocial behavior from occurring in the first place. While you may not necessarily have the workforce to watch the cameras in real-time, the Ursid system records everything it captures, allowing you to go back and playback footage of any timeframe you need.

Overall, rapid deployment cameras make a great addition to your security arsenal.

When There Is No Fixed Network Access [Wireless or Hard Wired]

Rapid deployment cameras offer instant video monitoring over 3G, 4G, or satellite networks with minimal delay. This enables users to view footage when no other transmission method is present. The minimal delay of rapid deployment also ensures that businesses can deal with problems as they occur instead of carrying out delayed responses.

Rapid Deployment Cameras in the Rural Community

Traditional CCTV cameras require a lot of wiring, which isn't always feasible in a private estate, farm, orchards, or hunting estate. Alternatively, rapid deployment devices are entirely wireless, perfect for estates and other similar locations where wiring is a problem, particularly with seasonal crop production. In addition, rapid deployment cameras can be placed in any area around the estate, offering maximum security.



What Are The Key Considerations When Investing In Rapid Deployment Cameras?

If you choose to invest in a rapid deployment system, you must select the right strategy to avoid problems and make the most of your investment. Most rapid deployment systems will be wireless, and all will offer some video footage of the location they are placed in. However, there are some other considerations that you must consider before settling on a device or system.

High-Definition Quality

When it comes to spotting crime or providing evidence in court, the quality of your image matters, a blurry or unclear picture could miss out on essential details of a crime scene to help the authorities solve a case or provide evidence against a criminal party.

Many of the areas covered by CCTV are dark, poorly lit, or at a distance which means that regular quality cameras won't capture the scene. You should use cameras with specific low light capture quality and IR.

Ease Of Installation

The easier a CCTV system is to install, the less it will cost and the easier to fix if it gets damaged. Rapid deployment systems can be installed in minutes and require no wiring to be up and running. Before investing in your rapid deployment system, ensure that this is the case and inquire about the system's ease of installation.



Multiple Power Options

Your rapid deployment system device should have multiple power options that make it easy to use almost anywhere you go for maximum flexibility. The more power options you have, the less limited you will be using the device. Look for a device with both regular power and others, such as solar and battery.

Access From Any Device

If a situation does arise where you need to access your CCTV footage, you should access the footage from any permitted mobile device. This makes it easy to keep watch over your property at any time so that you can spot problems as soon as they occur. This also makes it far easier to present the footage as evidence if need be. An excellent rapid deployment system should have a 3G, 4G, 5G, or satellite transmission system, enabling you to view the footage remotely.

Night Time Capability

It is no secret that many crimes occur during the night time when the lights are dimmed, and criminals think that they won't be seen. Suppose your rapid deployment system does not have infrared capabilities. In that case, it will struggle to pick up activities that happen during darkness, and those criminals will be able to go undetected, as they wished. Therefore, you should always ensure that your system can produce a clear picture at night using infrared technology and that this feature automatically turns on when it starts to get dark.

What Are The Biggest Mistakes To Avoid?

The biggest mistake to avoid when choosing a new rapid deployment system is to select a device that is ❶ not wireless, ❷ does not have infrared technology, and ❸ cannot transmit footage to a remote location. These three features make it far easier to protect your property against crime and will save you a lot of time and stress in the long run.

Why Choose Ursid's ReconEyez Rapid Deployment Cameras?

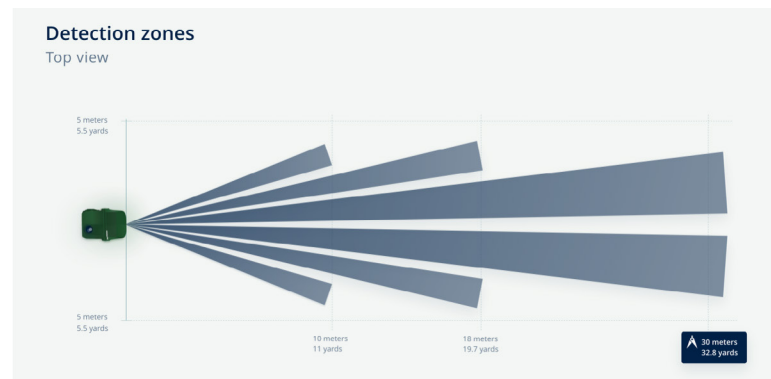
Our rapid deployment cameras prevent you from experiencing any time delay by working quickly and effectively. We can install your new system quicker than most other CCTV companies and always ensure that our devices are of the highest quality.

When choosing an RDC solution, consider whether you need a static camera for a more reactive solution or a pan-tilt-zoom [PTZ] camera for proactive monitoring. A reactive system is used for post-event so that a high-resolution fixed camera could suit this application. In contrast, a PTZ camera is excellent for live monitoring by, for example, a CCTV control room or monitoring station.

Advanced motion detection

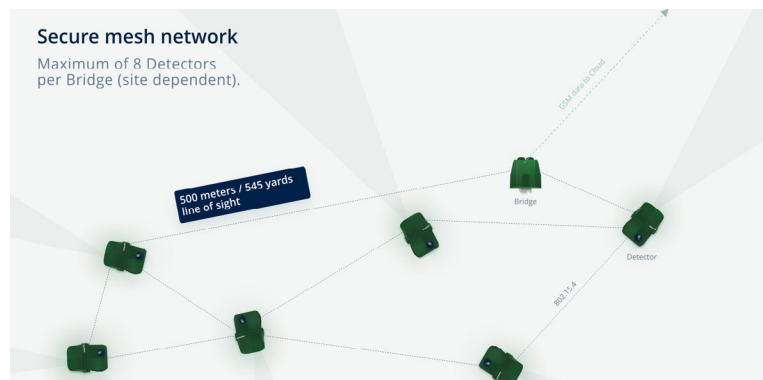
The Detector combines a passive infrared (PIR) sensor with signal analysis to monitor the area for thermal signatures. If motion is detected, an alarm is generated and the camera is activated.

- » 35m / 38yd / 115ft detection range
- » 95% detection probability (person speed 0.4 m/s / 0.9 mph, ambient temperature 36°C / 96.8°F)
- » Artificial intelligence backed sensitivity algorithms
- » Low false alarms due to machine learning
- » Digital signal processing



Secure mesh network

Maximum of 8 Detectors per Bridge (site dependent).



Reliable low-power communications

Reconeyez devices communicate using secure and reliable 2.4GHz low-power radio.

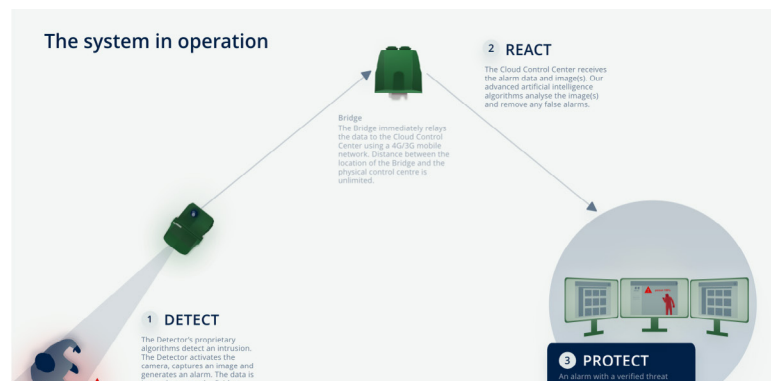
- » Up to 500m / 547yd / 1640ft with a line of sight
- » Circa 100m / 109yd / 328ft obstructed
- » Proprietary low-power mesh technology
- » Maximum of 8 Detectors per Bridge (site dependent)

How does it work?

Reconeyez Detectors use passive infrared (PIR) sensors and signal analysis to track thermal signatures across the monitored area.

Once motion is detected the Detector activates the appropriate camera for available light conditions, captures an image and generates an alarm. Move from detection to controlled protection in seconds.

- » Detect
- » React
- » Protect



CONTACT DETAILS

Tel: +44 01603 336 406

Mobile: +44 (0)7590 049888

Email: info@ursid.info

Website: www.ursidconsulting.com

Emergency Contact: +44 (0) 7590 049888



URSID
CONSULTING